

# More than bricks and mortar housing in later life

Wendy Cocks

Care and Repair England

# Care and Repair England

## Working

- To improve older people's housing
- To deliver innovative programmes and supporting their expansion
- With older people and government across England
- With partners – government, health and housing

## We believe

- All older people should have decent living conditions in a home of their own choosing
  - Age Action Alliance – Safer Warmer Homes group
  - Housing and Ageing Alliance
  - Housing Champions Network
  - Active Ageing at Home – Barcelona Declaration

# Home

- **Home is not....** just 'a unit of accommodation'
- Our homes are intimately linked with
  - Status and Control
  - Wealth
  - Well being and health

# The success of ageing ....

- Life expectancy is increasing
  - 82 years (women)
  - 78 years (men)
- Huge contributors to communities
- Numbers set to rise



# Where older people live

- A third of ALL households
- 90% live in ordinary homes
- 75% home owners  
(higher in some areas - rural)
- Many live on their own
- Aspiration: to live independently and stay in control

# 'More than bricks and mortar'

- We asked older people across the country *'What does 'HOME' mean to you?'*
- The importance of a home which is warm, safe & secure is a key theme

# Home is ....

- 'having your own front door'
- 'sleeping in your own bed'
- 'entertaining friends'
- 'sitting in your favourite chair'
- 'doing what you want'

# Housing: key issues

- Over 75's more likely to live in poor housing – (home owners)
- Housing conditions are linked to health conditions
- Many older people need home adaptations
- Older people want small repairs and practical help in the home



# Housing: key issues

- Access to advice on housing, care and support is patchy
- There is a shortage of housing options
- Older people are not seen as crucial to housing planning and provision and are not consulted
- Housing is still seen as the 'poor relation' in health and social care

# What should be done ...

- Access to fast, affordable help with home repairs and adaptations
- ...and to impartial information, advice and support on housing, care and support options
- Homes and neighbourhoods to be 'age friendly'
- Variety of housing options with older peoples views central

# What needs to change ...

- Housing's role in health and care recognised – and funded
- Older people's needs and aspirations in housing planning
- Change in attitudes: a home not a unit
- Advice and information resources everywhere
- Older people 'part of' not 'apart from' decision making

# Involving Older People

- Using their skills and knowledge can lead to:
  - Better design
  - Future-proofing
  - Engagement brings better outcomes for all

# Lifetime Homes

Bathroom planned to give side access to WC and bath

Easy route for a hoist from bedroom to bathroom

Provision for a future stair lift

Sockets, controls, etc. at a convenient height

Identified space for future platform lift to bedroom

Accessible entrance level WC (opportunity for shower later in 3 bed or larger homes)

Low window sills

Width of doors and hall allow wheelchair access

Walls able to take adaptations

Turning circles for wheelchair in ground-floor living rooms

Identified space for temporary entrance level bed

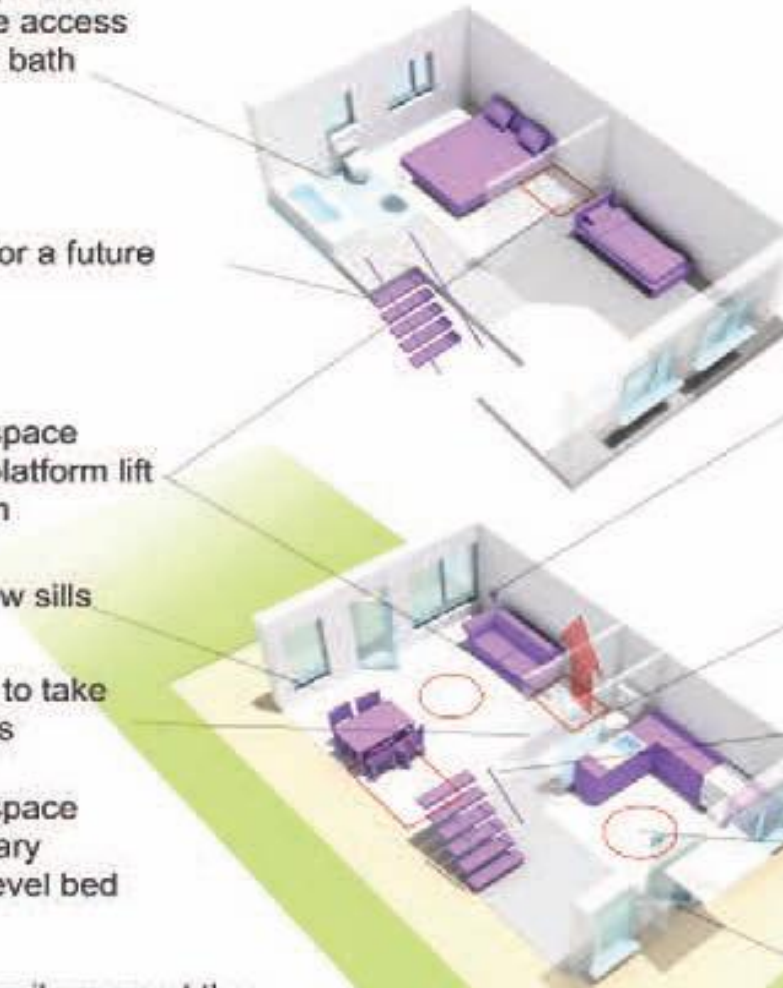
Accessible threshold covered and lit

Living or family room at the entrance level

Parking space capable of widening to 3300mm

Distance from the car parking space kept to a minimum

Level or gently sloping approach to the Lifetime Home



# Housing Standards Consultation

An opportunity for you and your organisation:

- Review of building regulations looking at:
  - Space
  - Accessibility
  - Adaptability
  - See separate sheet

**Closing Date:**

**22<sup>nd</sup> October 2013**



**Care & Repair England**  
**The Renewal Trust Business Centre**  
**3 Hawksworth Street**  
**Nottingham NG3 2EG**  
**Tel: 0115 950 6500**

**Email: [info@careandrepair-england.org.uk](mailto:info@careandrepair-england.org.uk)**  
**[www.careandrepair-england.org.uk](http://www.careandrepair-england.org.uk)**